

Meet Space

SANTA MARIA NOVELLA

c-hotels

Index

4.
Meeting and events at c-hotels

6.
Rooms and facilities

9.
Universal congress

10.
Bespoke

12.
Satellite rooms

14.
Sleeping

15.
Eating and drinking

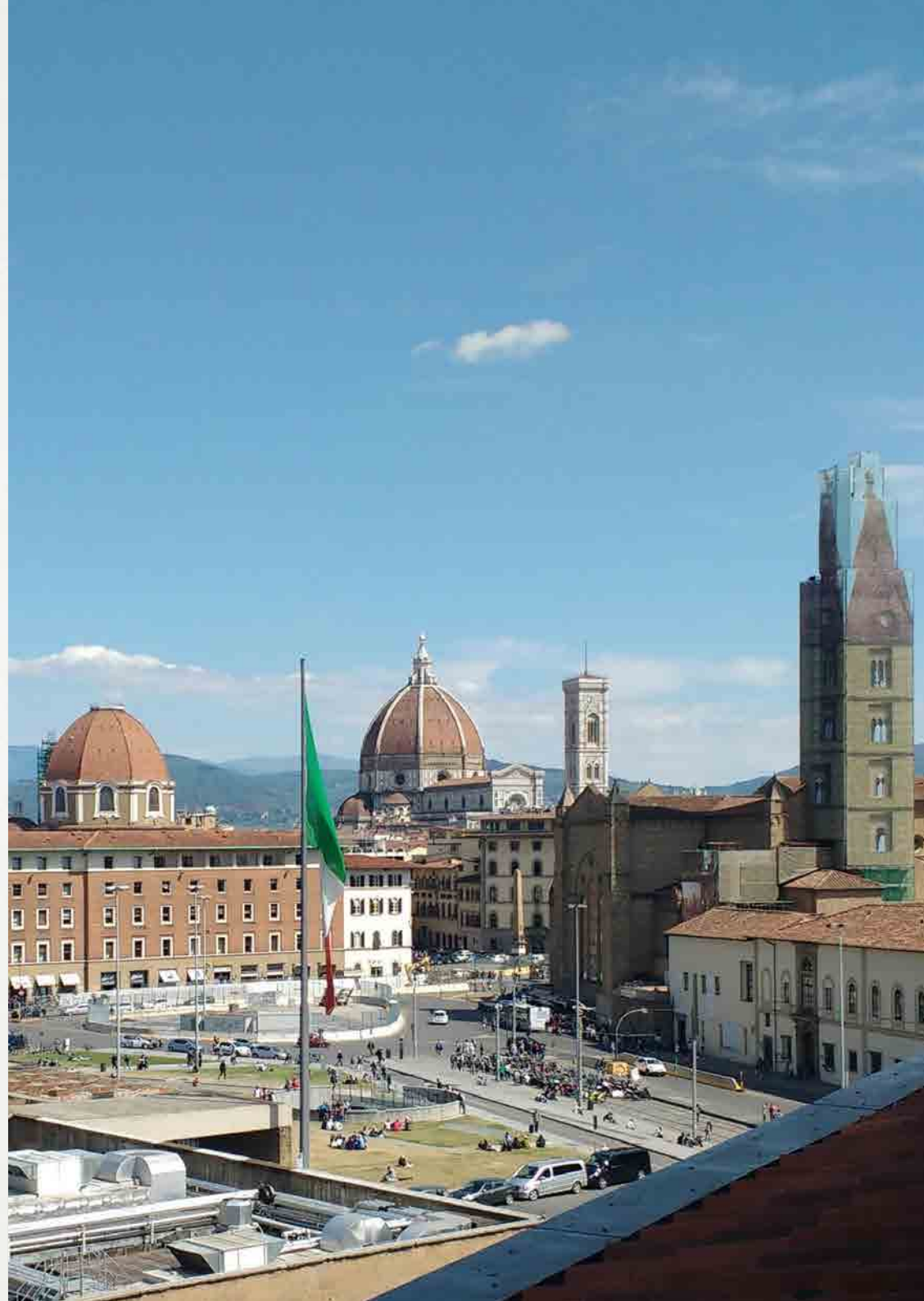
16.
Points of interest

Meetings and events in the heart of Florence

A dynamic location right in the heart of Florence, able to host events and business meetings up to 180 people thanks to its bright functional spaces.

Tailor-made banqueting services from delicious buffets and excellent breakfasts.

Innovative also regarding the wide accommodation offer in the four hotels, easy to reach by walking and with a staff always available to organize in the best way possible any event or congress.





Adjacent foyer Universal congress room



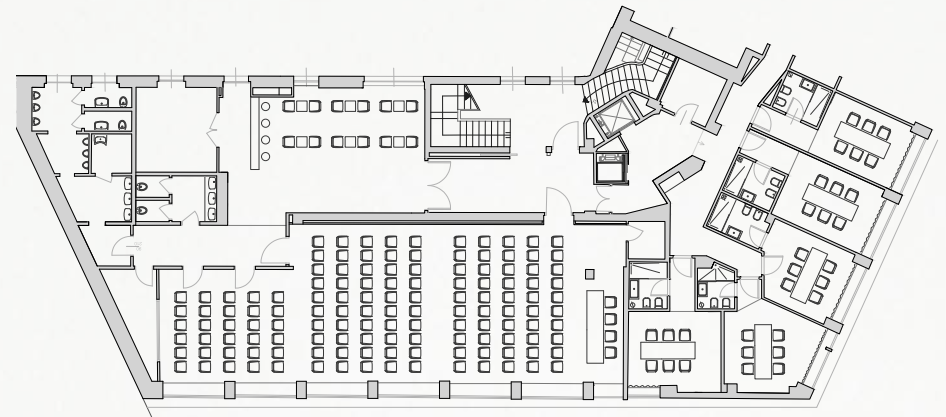
Cocktail stand set up in the Sweet bar



Universal congress room plenary setting up

Universal congress

Santa Maria Novella



Plenary

LENGHT (6,7 m) WITH (25,4 m) AREA (170 mq)

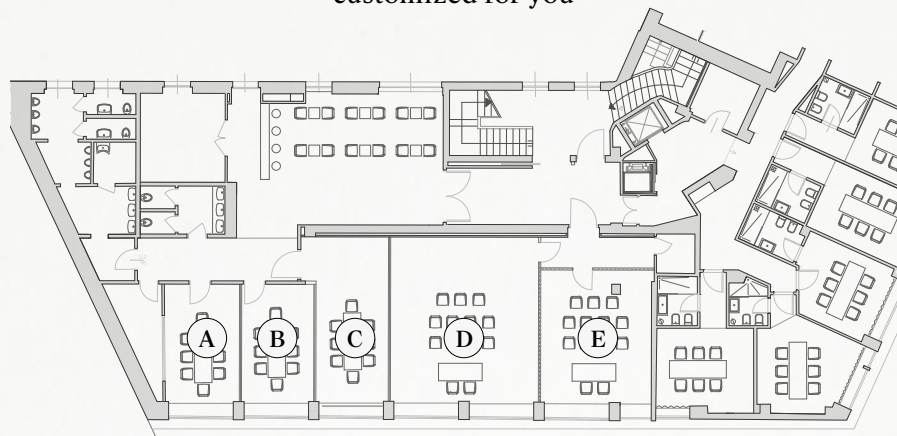
SET UP	Theatre	Cabaret	Boardroom	U shape
	180	70	40	35

Santa Maria Novella Convention Center is the ideal place to host events (from 10 to 180 people) with over 270 square meters consisting in exhibition and convention spaces. An elegant foyer for welcoming the guests, available for coffee breaks and refreshments.

The room is modular according to every need. Divisible into five meeting rooms of different sizes, with natural light and perfectly equipped, ideal for conferences, product launches and showroom.

Bespoke

customized for you



A

LENGHT (3,3 m) WITH (6,1 m) AREA (20 mq)

SET UP	Theatre	Cabaret	Boardroom	U shape
	16		12	8

B

LENGHT (3,3 m) WITH (6,1 m) AREA (20 mq)

SET UP	Theatre	Cabaret	Boardroom	U shape
	16		12	8

C

LENGHT (3,3 m) WITH (9,1 m) AREA (30 mq)

SET UP	Theatre	Cabaret	Boardroom	U shape
	20		14	10

D

LENGHT (6,7 m) WITH (8,3 m) AREA (55 mq)

SET UP	Theatre	Cabaret	Boardroom	U shape
	40	14	20	16

E

LENGHT (6,7 m) WITH (6 m) AREA (40 mq)

SET UP	Theatre	Cabaret	Boardroom	U shape
	28		12	10

A+B

LENGHT (5,4 m) WITH (6,7 m) AREA (40 mq)

SET UP	Theatre	Cabaret	Boardroom	U shape
	20		16	14

C+D

LENGHT (7,6 m) WITH (11 m) AREA (85 mq)

SET UP	Theatre	Cabaret	Boardroom	U shape
	60	30	22	18

C+D+E

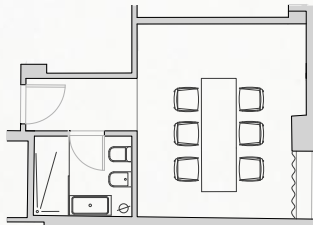
LENGHT (7,6 m) WITH (16 m) AREA (120 mq)

SET UP	Theatre	Cabaret	Boardroom	U shape
	100	40	26	22



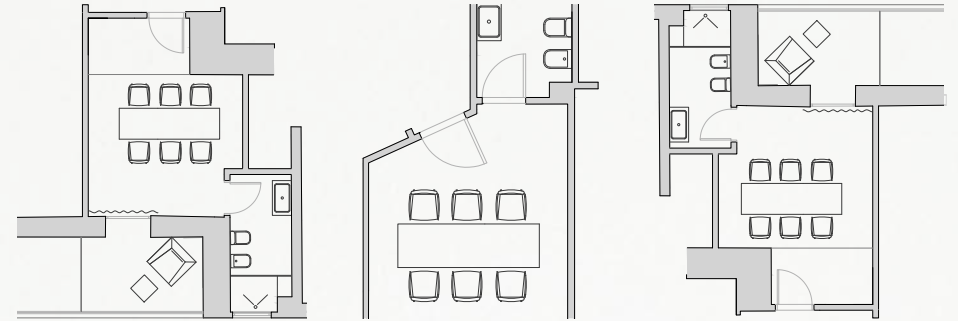
Satellite I

LENGTH (3,3 m) WITH (4 m) AREA (18 mq)



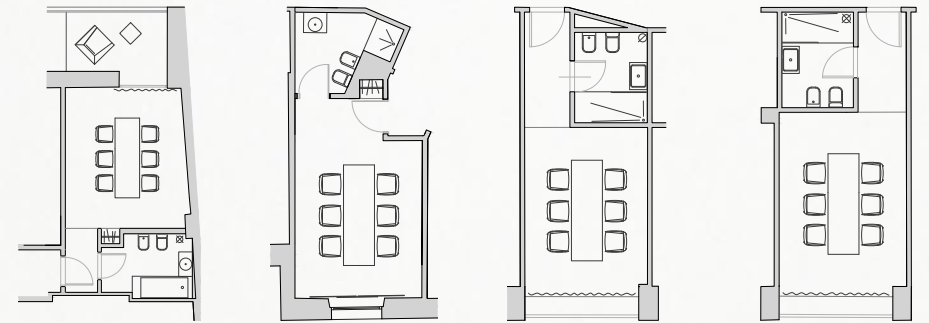
SET UP	Theatre	Cabaret	Boardroom	U shape
	10		10	8

8 Meeting Rooms, setting up on a single table up to 10 people, decorated with designer objects and open bookcase, an environment designed for business interviews or small meetings.



Satellite room II, III, IV, V

SET UP	Theatre	Cabaret	Boardroom	U shape
	10		10	8



Satellite room VI, VII, VIII

SET UP	Theatre	Cabaret	Boardroom	U shape
	10		10	8

Sleeping



Diplomat
Hotel



Ambasciatori
Hotel



Joy Hotel



Club Hotel

450 rooms complete the convention offer, all renovated in a modern and elegant style placed in

four properties adjacent to one another in a single central pole in Florence



San Pietro Restaurant

Eating and drinking

3 Restaurants with a maximum capacity of up to 200 seats for cocktails, business lunches, finger buffet, with custom menus for every palate.

3 American Bars to organize private cocktails, in a large room divisible into private areas.

Airports

(10 km)

Firenze “Amerigo Vespucci”

Taxi or shuttle

(69 km)

Pisa “Galileo Galilei”

Train or shuttle

(84 km)

Bologna “Guglielmo Marconi”

Train or bus

Highway

(10 km)

A1 - exit Florence North

Station

(0,02 km)

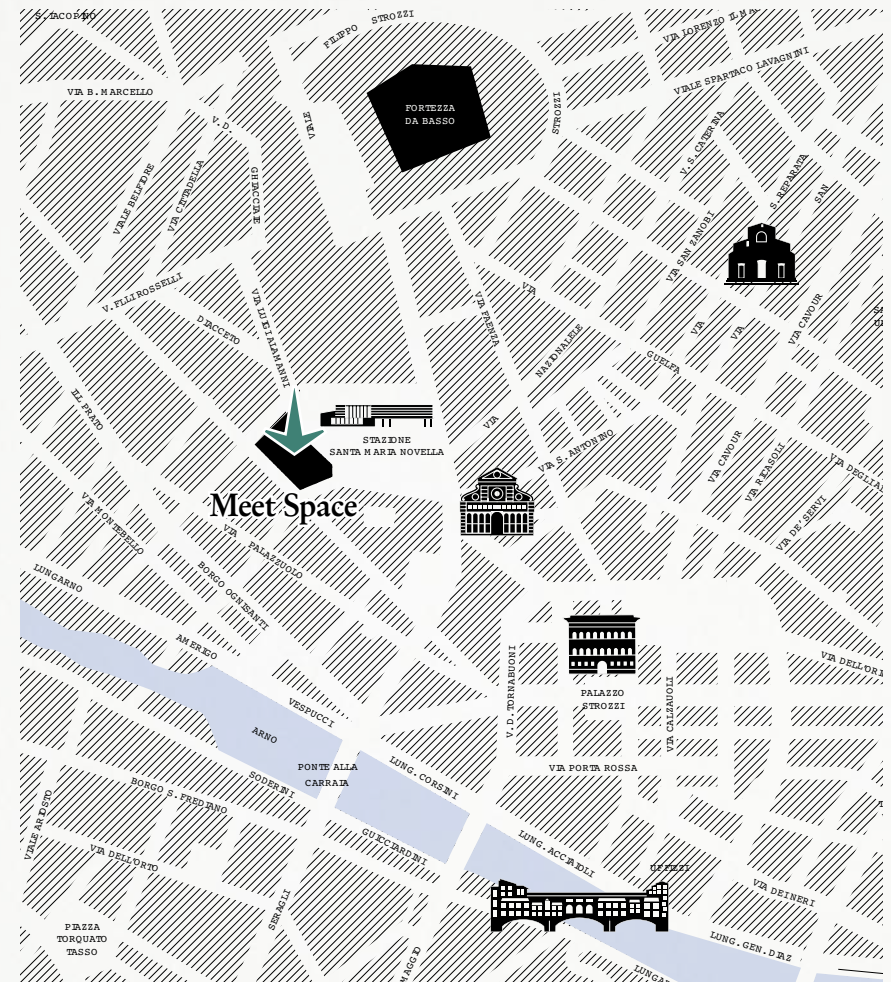
Santa Maria Novella high speed trains every 30 min.
from the main Italian cities

Firenze Fiera

(0,4 km)

Fortezza da Basso

(0,7 km)



Meet Space

Via Alamanni, 3 - 50123 Firenze
Tel. +39 055 218081 - Mobile: +39 335 7322564
meetings@c-hotels.it - www.c-hotels.it

#hotelsflorence